

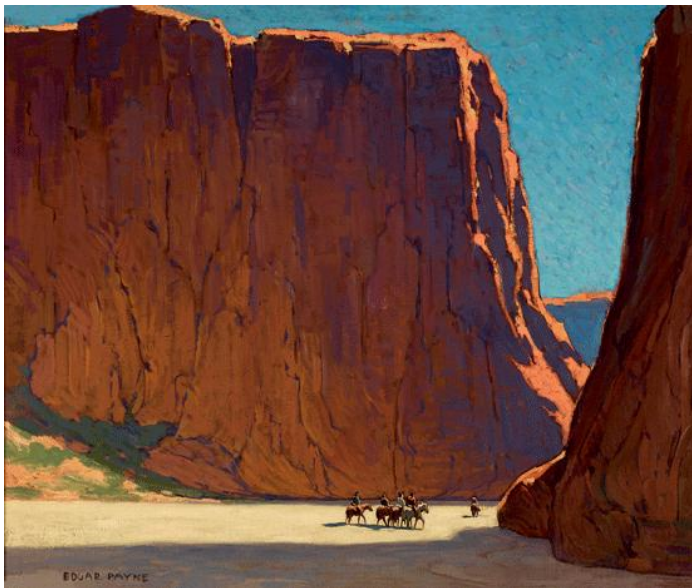
MEDIA CONTACT

Emma Jacobson-Sive, Director of Public Relations
Tel (626) 568-3665 x12, emma.jacobson@pmcaonline.org

FOR IMMEDIATE RELEASE

March 15, 2012

Edgar Payne: The Scenic Journey June 3 - October 14, 2012



LEFT to RIGHT: *Sunset, Canyon de Chelly*, 1916. Oil on canvas, 28 x 34 in. Mark C. Pigott Collection;
Cargo Boats, Chioggia, Italy, 1923. Oil on canvas, 43 x 43 in. The Buck Collection, Laguna Beach, California

PASADENA, CA – The Pasadena Museum of California Art (PMCA) is proud to present *Edgar Payne: The Scenic Journey*, a retrospective of artist Edgar Payne (1883–1947), one of the most gifted of California’s early plein-air painters. Payne’s work exemplifies the power and dynamism that separate California Impressionism from the picturesque French Impressionism of the 18th Century. One of the first exhibitions of his work in over forty years, the retrospective features nearly 100 paintings and drawings, as well as photographs and objects from the artist’s studio; the exhibition will be on view from June 3 - October 14, 2012.

Born in the Ozark Mountains of Missouri in 1883, Payne began his art career by painting signs, stage sets, and murals. He considered himself completely self-taught—his training lasted only two weeks at the Chicago Art Institute—and believed that nature was his best teacher. He ultimately settled in California and from there travelled widely. He exhibited at the Panama-Pacific International Exposition in San Francisco, was commissioned by the Santa Fe Railroad to

create paintings of the Southwest, won an honorable mention at the Paris Salon, and was a founding member of the Laguna Beach Art Association.

Payne utilized the animated brushwork, vibrant palette, and shimmering light characteristic of Impressionism, but his employment of powerful imagery was unique among artists of his generation. While his contemporaries favored a quieter, more idyllic representation of the natural landscape, Payne was devoted to its raw, rugged beauty. His majestic and vital landscapes are informed by his reverence for the natural world. The exhibition traces Payne's artistic development as he traveled the world in search of this grandeur: the Southern and Central California coast, the Sierra, the Swiss Alps, the harbors and waterways of France and Italy, and the desert Southwest.

"In the course of his painting expeditions, Payne was determined to rediscover a broad and epic landscape that captured and conveyed the 'unspeakably sublime,'" said Scott A. Shields, Ph.D., the exhibition's curator and associate director and chief curator at the Crocker Art Museum. "In each locale, he sought vitality, bigness, nobility, and grandeur, which he turned into unified, carefully calculated compositions with brushwork that seemed to pulsate with life."

This exhibition was organized by the Pasadena Museum of California Art and curated by Shields. A 272-page, full-color catalogue published by Pomegranate Communications accompanies the exhibition and includes essays by Shields; Lisa N. Peters, director of research and publications at Spanierman Gallery, New York; Peter Hassrick, director emeritus of the Petrie Institute of Western American Art at the Denver Art Museum and of the Buffalo Bill Historical Center in Cody, Wyoming; and Jean Stern, executive director of The Irvine Museum. Also included is an introduction by Patricia Trenton, senior advisor for the Edgar Payne project, and a preface by Jenkins Shannon, executive director of the Pasadena Museum of California Art.

Organized by the Pasadena Museum of California Art, the exhibition debuted at the Crocker Art Museum and will be on view at the Gilcrease Museum, Tulsa, Oklahoma, from December 1, 2012 to March 24, 2013.

PROGRAMS

OPENING RECEPTION

Saturday, June 2, 2012

7:00 – 9:00 pm

\$5 admission

Free for PMCA Members

PASADENA MUSEUM OF CALIFORNIA ART (PMCA)

Edgar Payne: The Scenic Journey

Page 3/3

Mission:

The mission of the Pasadena Museum of California Art (PMCA) is to present the evolution of California art and design through exhibitions that explore the cultural dynamics and influences that are unique to California.

Hours:

Wednesday – Sunday, 12:00 - 5:00 pm.

The Museum is closed July 4th, Thanksgiving Day, Christmas and New Year's Day.

Admission:

\$7 for Adults, \$5 for Seniors (65+) and Students with valid ID; free to PMCA Members and children under 12. Access for people with disabilities is provided.

Location/Parking:

The Museum is located at 490 East Union Street. From the 210 Freeway, take the Lake Avenue exit. Go south and take a right on Union Street. From the 110 Freeway/Downtown Los Angeles, follow the freeway until its end, then take Arroyo Parkway and turn right at Colorado, then left at Oakland to get to Union Street. Parking is available at the Museum.

PMCA Tours:

At this time, the museum does not offer regularly scheduled docent tours of our special exhibitions. However, docent tours are available to private groups for a fee of \$75. A non-refundable deposit of \$40 is due two weeks prior to the scheduled date in order to guarantee a tour. We regret that we are unable to accommodate tours for groups smaller than 10 or larger than 50 people. Before requesting a tour, please check the exhibition calendar to see which exhibitions will be available during your visit.

A discounted group rate of \$4 per person is available for groups of 20 or more, and free admission is offered to school groups of K-12 public school students. Please call to notify us at least one week in advance for these special admission rates.

For any questions or to make reservations for a tour or group rate, please call Shirlae Cheng-Lifshin at 626-568-3665 x17.

PMCA Information:

For information, the please call 626-568-3665 or visit the website: www.pmcaonline.org

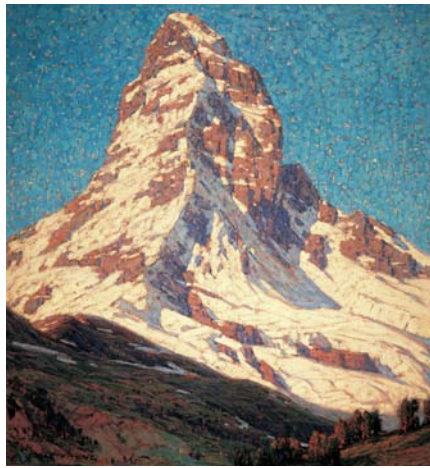
###

June 3 - October 14, 2012
at the Pasadena Museum of California Art

The below images are available for publicity.
Please contact Emma Jacobson-Sive, Director of Public Relations,
at (626) 568-3665 x12 or at emma.jacobson@pmcaonline.org



Sunset, Canyon de Chelly, c. 1916
Oil on canvas, 28 x 34 in.
Mark C. Pigott Collection



The Matterhorn from Zermatt, c. 1923
Oil on canvas, 52 x 48 in.
Collection of Mr. and Mrs. Jon R. Stuart



Cargo Boats, Chioggia, Italy, 1923
Oil on canvas, 43 x 43 in.
The Buck Collection, Laguna Beach,



The Rendezvous (Santa Cruz Island, CA), 1915
Oil on canvas, 33 x 42 in.
Private collection



Along the Riviera, Menton, France, 1922
Oil on canvas, 29 x 29 in.
Collection of James Taylor and Gary
Conway



Untitled [Laguna Seascape], c. 1918
Oil on canvas, 43 1/16 x 43 1/8 in.
Collection of D.L. Stuart Jr.